



TYPBC PRESENTS
**AUCKLAND TO
TAURANGA**



Thursday, 30 March,
Friday, 31 March,
Saturday, 1 April 2023

SAILING INSTRUCTIONS

SUPPORTING ORGANISATIONS:

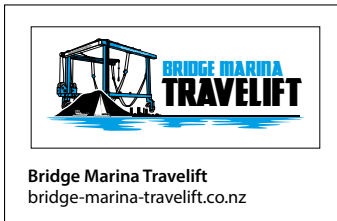


PLEASE SUPPORT OUR RACE SPONSORS:

PRINCIPAL SPONSOR:



SUPPORTING ORGANISATIONS: SILVER



SUPPORTING ORGANISATIONS: BRONZE





Altex Yacht & Boat Paint

AUCKLAND TO TAURANGA YACHT RACE 2023

Thursday 30th March 2023 to Saturday 1st April 2023

SAILING INSTRUCTIONS

The Organising Authority is the Tauranga Yacht & Power Boat Club (Inc.)
PO Box 14352, Tauranga 3143, New Zealand

1 RULES

The regatta will be governed by the rules as defined in *The Racing Rules of Sailing*.

1.2 The Yachting New Zealand Safety Regulations Part II for Keelers & Multihulls Category 3 and the rules of the classes entered shall apply.

1.3 Single-handed skippers are required to wear an appropriate personal flotation device at all times. This must meet or exceed YNZ Cat 3 (SR APPENDIX 4 LIFEJACKETS, PERSONAL FLOTATION DEVICES (PFD) & LIFEBUOYS).

1.4 Single-handed skippers are required to carry on their person at all times a registered EPIRB or PLB, plus at least one other waterproof third-party transmitting device.

1.5 Single-handed sailors are required to be tethered and wear a harness (either separate or integrated into a PFD) at all times unless below decks.

1.6 During the hours of darkness, the International Regulations for Preventing Collisions at Sea shall apply.

1.7 Appendix T, *Arbitration*, will apply.

1.8 Racing rules 51, 52, & 29.1 will be changed as follows:

Rule 51 Movable ballast is changed so that boats can be nominated with non-movable ballast or with a canting keel or water ballast tanks. A boat nominated with non-movable ballast and a boat with a lifting keel shall comply with RRS 51, Except as specified in clause 1.6 Lifting keels shall be locked in the down position and may not be moved whilst racing except as specified in these sailing instructions. Boats must comply with Yachting New Zealand Safety Regulations clauses 6.01(K) and 6.02(K).

Rule 52 Manual Power is changed so that Short-handed boats may use autopilots and other automatic steering systems.

Rule 29.1 is changed to a Boat that does not return to the pre-start side of the starting line will be given a 60-minute time penalty.

1.9 In variation of RRS Rule 42, a boat may use its engine and a boat with a lifting keel may raise its keel to assist in freeing itself after running aground or to extricate itself from a dangerous situation e.g., becalmed in the path of a ship. If the boat uses its engine, it shall motor or motor sail to the nearest safe navigable water not closer to the next mark than when its engine was started, cease motoring, and complete a two-turn penalty under sail before resuming racing.

2 NOTICES TO COMPETITORS

Notice to competitors will be posted on the www.a2t.nz website (Notices to Competitors).

3 CHANGES TO SAILING INSTRUCTIONS

Any change to the sailing instructions will be posted online before 0600 on the day it will take effect.

4 SIGNALS MADE ASHORE

Signals made ashore will be displayed from the Westhaven Start Tower located approximately 150 meters east of the RNZYS clubrooms.

5 CLASSES & HANDICAPS

5.1 Results will be calculated for each division, subject to sufficient numbers.

5.2 PHRF Handicaps applied to the race shall be those published by Yachting NZ as at 1700 hours, Monday 27th March 2023.

5.3 Multihull handicaps applied to the race shall be those advised by NZMYC as of 1700 hours, Monday 27th March 2023.

5.4 Any other grouping of 5 or more boats may be classified as a division. A boat may be classified in more than one division.

6 RACING AREAS

The Race Area will be on the waters between the start area in Auckland and the finish off Tauranga.

7 THE COURSES

Starts in the Waitemata Harbour between the Westhaven Tower and the Westhaven ODM Harbour Racing Mark, take Channel Island to starboard and finish at A Beacon near the entrance to Tauranga Harbour.

8 MARKS

8.1 FAIRWAY MARKS

Boats racing shall pass on the main channel side of the following fairway marks:

1. Rangitoto Beacon,
2. Iliomama Rock Beacon,
3. Browns Island Beacon,
4. Beacon on Emu Rock (off Motutapu),
5. Bean Rock Light and Doris Rock Beacon (approx. 25m north),
6. Red buoys on eastern side of Motuihe Channel,
7. Beacon on Sewer Outlet (Orakei),
8. Cable beacons east of Devonport Wharf,
9. Green Sandspit marker stake (SW of Torpedo Wharf),
10. All moored vessels in or adjacent to the designated Small Craft Moorings areas shown on Chart NZ 5322,
11. The Okahu Bay wave break and all moored vessels in the Okahu Bay mooring area,
12. The harbour bridge main navigational span pylons.

8.2 Channel Island - approximately Lat 36 degrees 25.4 minutes South, Long 175 degrees 19.9 minutes East. Refer to Chart NZ532.

9 OBSTRUCTIONS

9.1 PROHIBITED RACING AREAS:

The following areas (shown in Attachment C) are designated as Obstructions for the purposes of the RRS Definitions and RRS 19 and 20.

1. The Westhaven Boat Harbour area defined as south of a line representing an extension of the breakwater to the most northern point of Wynyard Point – (diagram A),
2. The Commercial Harbour area defined as south of a straight line drawn between the most northern point of Wynyard Point and the north-western point of the Fergusson Container Terminal – (diagram B),
3. The Defence area marked on Chart NZ 5322 around the Naval Dock, Calliope Wharves, Devonport – (diagram C).

9.2 LARGE VESSEL MOVING PROHIBITED ZONES:

At all times boats shall comply with the Auckland Council Navigation Safety Bylaw 2021 Part 2, Subpart 10, clause 54 – “Moving Prohibited Zone” as described below.

Moving Prohibited Zones are designated as Obstructions for the purposes of the RRS Definitions and RRS 19 and 20.

Auckland Council Navigation Safety Bylaw 2021 – Part 2, Subpart 10, Clause 54 - Vessels Must Not Impede a Large Vessel in A Pilotage Area

1. The person in charge of a vessel under 500 gross tonnage in a pilotage area must not allow that vessel to impede the navigation of any vessel of 500 gross tonnage or more.
2. The person in charge of a vessel must not navigate the vessel within the moving prohibited zone of a large vessel that is in a pilotage area.
3. A moving prohibited zone is an area of navigable water around a large vessel that –
 1. extends 100 metres to each side or the width of the marked channel, whichever is the lesser distance; and
 2. continues at the width in (a) to 100 metres astern and 500 metres ahead of the vessel; and
 3. follows the line of the marked or buoyed channel when changing course.
4. However, (2) does not apply to the pilotage area within the Tamaki River.

10 STARTS

The start line is between the flagstaff flying an Orange Flag on the Westhaven Tower approximately 150 metres east of the RNZYS clubrooms and the yellow Westhaven ODM Harbour Racing Mark. Refer to diagram Attachment A and Chart 5322.

- 10.1 A boat that does not start within 30 minutes after her starting signal may be scored Did Not Start without a hearing. This changes RRS A5.1 and A5.2.
- 10.2 Boats are required when arriving prior to the start to notify the Starting Tower on VHF Channel 77 of their arrival and identify themselves by Boat Name, Sail Number, and number of persons onboard.
- ~~10.3 Competitors are also required to text their boat name to 021 08801160 NO LATER than their 5 minute warning signal. Any boat that fails to do so may be disqualified from the race.~~
- 10.4 Rule 42.1 is changed by the addition of the following; When an Individual Recall is signalled the boat or boats that are identified as being OCS may motor back to the pre-start side of the starting line, taking the pin end start mark to Port, or the inner distance mark to Starboard. The boat must then cease motoring before doing a Two Turns Penalty under sail alone, before resuming racing.
- 10.5 In the event of a boat/s being OCS then the Tower will attempt to notify them on VHF 77. Note non receipt of a VHF OCS notification is not grounds for redress.

10.6

Division		Day	Date	Warning Signal	Class Flag
7	Cruising	Thursday	30 th March	0955	Black & White
5	Multihull	Friday	31 st March	1555	Green
1, 2, 3, 6	Monohull	Friday	31 st March	1600	White
4	Single-handed	Friday	31 st March	1605	Yellow

11 THE FINISH

- 11.1** The finish line is a transit line from Tauranga Port 'A' Beacon and the green leading light triangle located on Matakana Island, extending seawards of 'A' Beacon for a distance of 200 metres maximum. Boats shall take Tauranga 'A' Beacon to starboard. Refer to the diagram in Attachment B and Chart 5412.
- 11.2** Boats are to finish between the Finish Boat and 'A' Beacon when the Finish Boat is on station.
- 11.3** When approaching the finish line boats are required to call the Tauranga Race Control on Channel 3 and identify themselves by Boat Name and Sail Number.
- 11.4** When finishing at night boats are requested to illuminate their sail number to assist in identifying their boat.
- 11.5** If the Finish Boat is not on station boats shall round A Beacon to starboard and take their own finish time from a GPS, and TXT their sail number and finishing time to Tauranga Race Control cell phone 0278 187 632.

12 TIME LIMIT

There is no time limit.

13 PROTESTS AND REQUESTS FOR REDRESS

- 13.1** Promptly after finishing a boat intending to protest shall, in addition to the requirements of RRS61.1(a), inform Tauranga Race Control by VHF Channel 3 at the finishing line of her intention to protest and the identity of the boat(s) protested against. The protesting boat should receive an acknowledgement from Race Control This changes RRS 61.
- 13.2** Protests shall be lodged within three hours of the boat protesting having finished or retired.
- 13.3** Protest forms are available from the Tauranga Race Control Office located in the Finishing Tower, in the TYPBC clubrooms.

- 13.4** Protests shall be delivered to the Tauranga Race Control Office located in the TYPBC Finish Tower within the protest time limit. In the case of a boat which has retired to another port, the protest may be delivered by facsimile, email, or text.
- 13.5** To inform competitors of hearings in which they are parties or named witnesses, notices will be posted within one hour of the protest being lodged, or if the protest is received between 2100 hours Saturday 1st April and 0800 hours, the following day Sunday 2nd April the notice will be posted by 0900 hours the following day Sunday 22nd April.
- 13.6** The Protest Committee, instead of or in addition to the penalties specified in the RRS, may penalise a boat by a time penalty, or a scoring penalty.

14 SCORING

Each division will be scored on corrected time.

15 SAFETY REGULATIONS

- 15.1** All boats must have a valid Category 3 certificate or higher.
- 15.2** A boat that retires from a race shall notify the Tauranga Race Control as soon as possible. Also, they **must** text their **SAIL NUMBER** and the word **RETIRED** to 021 08801160. In addition, they shall contact Tauranga Race Control as soon as possible and advise of their retirement from the race, their position, destination, and ETA at that destination. Upon arrival at the destination the boat shall contact either the Coastguard Northern Region or Tauranga Race Control and advise of its safe arrival.
- 15.3** The OA reserves the right to close the entrance to Tauranga Harbour due to adverse sea conditions. Notification of this action shall be broadcast to all boats using VHF Channel **3**. If this situation arises then all boats shall be required to stand out to sea after finishing until they are notified that the harbour entrance is open.
- 15.4** Any contact, however minor, with any navigational mark, shall be reported to the Race Office by that yacht or any other yacht witnessing the incident. Competitors shall keep clear of all ships of 500 tonnes net register and upwards. This particularly refers to but is not limited to ships in the main navigational channel. Competitors shall abide by the current harbour regulations. This rule is not open to protest by other boats.
- 16 REPLACEMENT OF CREW OR EQUIPMENT**
The Race Committee must be supplied with an updated Crew List if any crew changes occur between the submission of the original Crew List and the start of the race. Boats that do not comply may be scored DNF (Did Not Finish), or given such other penalty as assessed by the Protest Committee.

17 EQUIPMENT AND MEASUREMENT CHECKS

- 17.1** A boat or equipment may be inspected at any time for compliance with the Sailing Instructions.
- 17.2** A boat may be instructed by the Safety Officer to proceed immediately to a designated area for inspection.
- 17.3** The Safety Officer may lodge a protest against any boat that is found not to comply with the Sailing Instructions

18 OFFICIAL BOATS

If a Finish Boat is at the finish line it will be displaying the TYPBC burgee and a blue flag. At night, a blue strobe or spotlight may be used.

19 RADIO COMMUNICATION & TXT MESSAGING

- 19.1** The primary position reporting will be via TXT 021 08801160. In the event that your TXT acknowledgement is not received. Then: -
- 19.2** The following VHF Channels shall be used during the race in the order given: -
- 19.3** From 30 minutes prior to start time and up to 30 minutes after the last start the RNZYS will monitor VHF Channel 77.
- 19.4** From Auckland to the exit from Hole in the Wall the Northern Region Coast guard will monitor VHF Channel 60.
- 19.5** After exiting the Hole in the Wall, VHF Channel **3** will be monitored by Tauranga Race Control.
- 19.6** Within the Tauranga Harbour – VHF Channel 77 for Tauranga Race Control and VHF 77 for Marina Control Boat.
- 19.7** If necessary, race officials may be contacted by telephoning:

RNZYS Sailing Office	09 360 6809
Tauranga Race Control	07 578 5512
Tauranga Race Control Cell phone	0278 187 632
Tauranga Coastguard	07 578 5579
Northern Region Coastguard	*500

19.8 IMPORTANT: For safety reasons the organisers need to know the approximate whereabouts of boats. Therefore, boats must report at the following positions by TXT Messaging to 021 08801160 as follows:

Location	When	Message
Briefing	Upon arrival to the briefing	Boat Name, Sail No, Briefing
Channel Island	Prior to or soon after "Channel Island"	Boat Name, Sail No, Channel Island
Hole in The Wall	Soon after exiting "Hole in the Wall"	Boat Name, Sail No, Hole in the Wall
Slipper Island	When abeam "Slipper Island"	Boat Name, Sail No, Slipper Island
Karewa Island	When abeam "Karewa Island"	Boat Name, Sail No, Karewa Island
Retirement	As soon as possible	Boat Name, Sail No, RETIRED, POB, Destination, ETA

19.9 The lead boats of the race shall call Tauranga Race Control VHF Channel 3 when they are approximately two hours from the finish line so a finish boat can be on station.

19.10 All boats must call Tauranga Race Control VHF Channel 3 when approaching the finish.

19.11 Boats to call Marina Control on VHF Channel 77 as soon as possible upon entering the Tauranga Harbour for berthing instructions and welcome pack.

19.12 Should a boat not receive an acknowledgement from any of these text messages they MUST contact race control by phone or VHF radio. (DP)

19.13 VHF radios shall be set to transmit on the "International" (Int) setting.

20 PREDICT WIND TRACKER

20.1 For safety reasons, increased interest in online viewing of the race and developing race organization practice, each entrant is required to use the Predict Wind GPS tracking service. To use the service, you will need two smartphones (one as a back-up) that use either iOS9 and above or Android 5 and above operating systems. The Predict Wind GPS tracking service is being made available at no cost to each competitor.

20.2 Full instructions on how to install and use the app are found at <http://www.predictwind.com/tracker>; Select Yacht Club: TYPBC; Race: Auckland-Tauranga. Select your division and manually enter your boat name. It is recommended that all competitors test the tracking functionality at least one week before the event and view the data at <http://forecast.predictwind.com/tracking/race/TYPBC> to ensure that the service is working on their phone. Any technical enquiries or issues, please email Predict Wind at support@predictwind.com.

20.3 It is the crews' responsibility to test that the system works on their phones prior to the race. Each competitor is expected to check their tracker is turned on and **check battery levels are satisfactory at all times**. Only one phone should be used to send tracking data at any time. Failure to use the tracker for the entire race may result, at the sole discretion of the race committee, in a 20-minute time penalty for the yacht not sending the tracking data and also render an entry ineligible for the spot prizes.

21 PRIZES

21.1 1st prize will be awarded to divisions 1, 2, 3, 4, 5 and 6 and any additional class division. 2nd and 3rd prizes will be awarded if numbers permit.
4 entries in a division will be awarded 1st and 2nd prize.
5+ entries in a division will be awarded 1st, 2nd, and 3rd prize.

21.2 EARLY BIRD PRIZE: All the boats that have entered and have completed all requirements of entry by 1700hrs Friday 24th February 2023 will be entered in this draw.

21.3 ALL WOMEN CREW: For the first all women crew to finish the race.

21.4 All race entrants that attend prize giving will be eligible for spot prizes.

22 SIGNAGE

All boats shall affix any signage supplied by the Organising Authority, such as bow stickers or boom stickers, on the part(s) of the boat specified by the organising authority and carry it for the duration of the race.

23 INSURANCE

It is recommended each participating boat shall be insured with valid marine third-party liability insurance with a minimum cover of \$5,000,000 per incident or the equivalent.

If you require Insurance for the race, please contact Jacob Matchitt from Aon Insurance Brokers one of our race sponsors on 0272 484 769 or jacob.matchitt@aon.com.

24 DISCLAIMER OF LIABILITY

RRS 3 states: 'The responsibility for a boat's decision to participate in a race or to continue to race is hers alone.' By participating in this event each competitor agrees and acknowledges that sailing is a potentially dangerous activity with inherent risks. These risks include strong winds and rough seas, sudden changes in weather, failure of equipment, boat handling errors, poor seamanship by other boats, loss of balance on an unstable platform and fatigue resulting in increased risk of injury. Inherent in the sport of sailing is the risk of permanent, catastrophic injury or death by drowning, trauma, hypothermia, or other causes.

25 FURTHER INFORMATION CONTACT

The Club Manger
Tauranga Yacht and Power Boat Club (Inc).
PO Box 14352, Tauranga 3143
Phone: (07) 578 5512
Email: office@yacht.org.nz
Website: www.yacht.org.nz

26 OTHER FEES

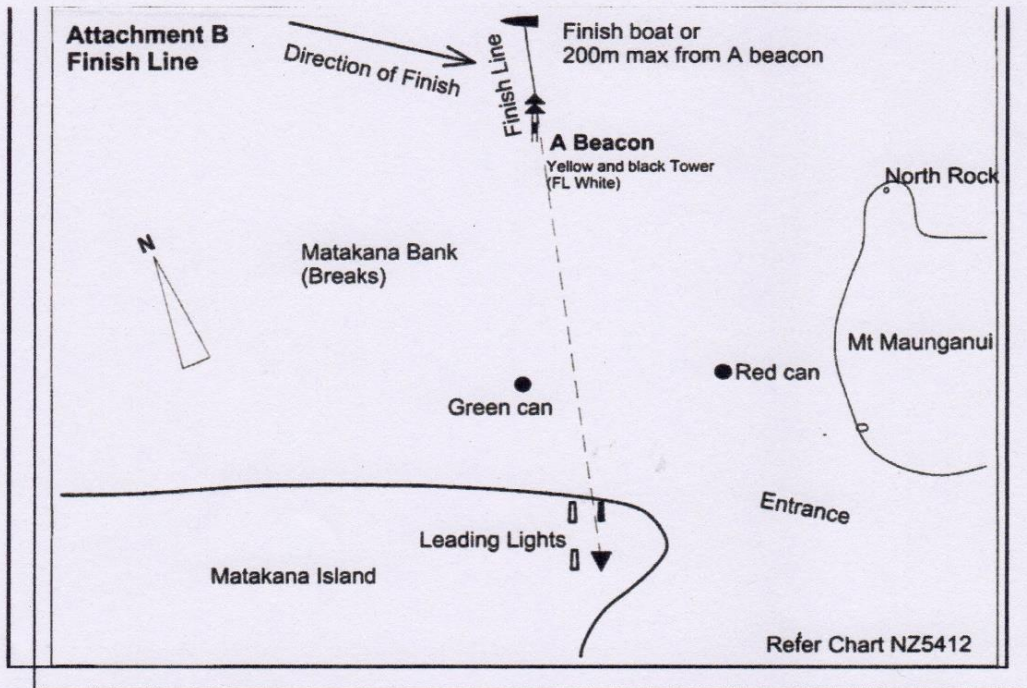
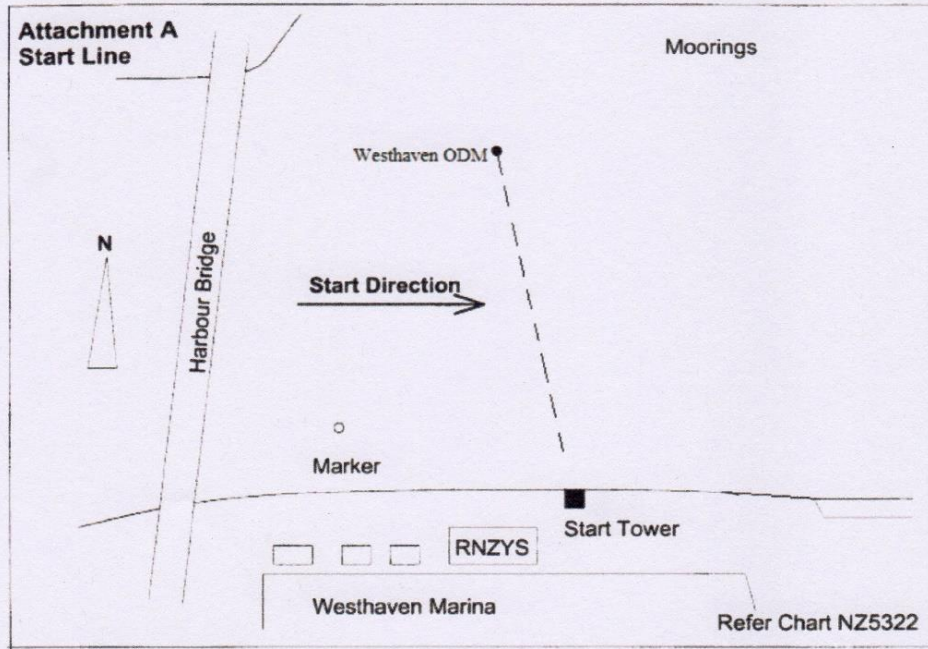
TAURANGA BRIDGE MARINA

Visiting race entries can book a free up to 14 metre marina berth from the Tauranga Bridge Marina. These will be available from arrival for one week until Saturday the 8th April 2023. Stay aboard fees may apply. Contact the Bridge Marina on 07 575 8264 or email tony@marina.co.nz.

TAURANGA MARINA

For information on availability and fees please contact admin@taurangamarina.co.nz or phone 07 578 8747.

ATTACHMENT A



ATTACHMENT C

The following areas are designated as obstructions: - refer to SI 9.1.

Diagram A

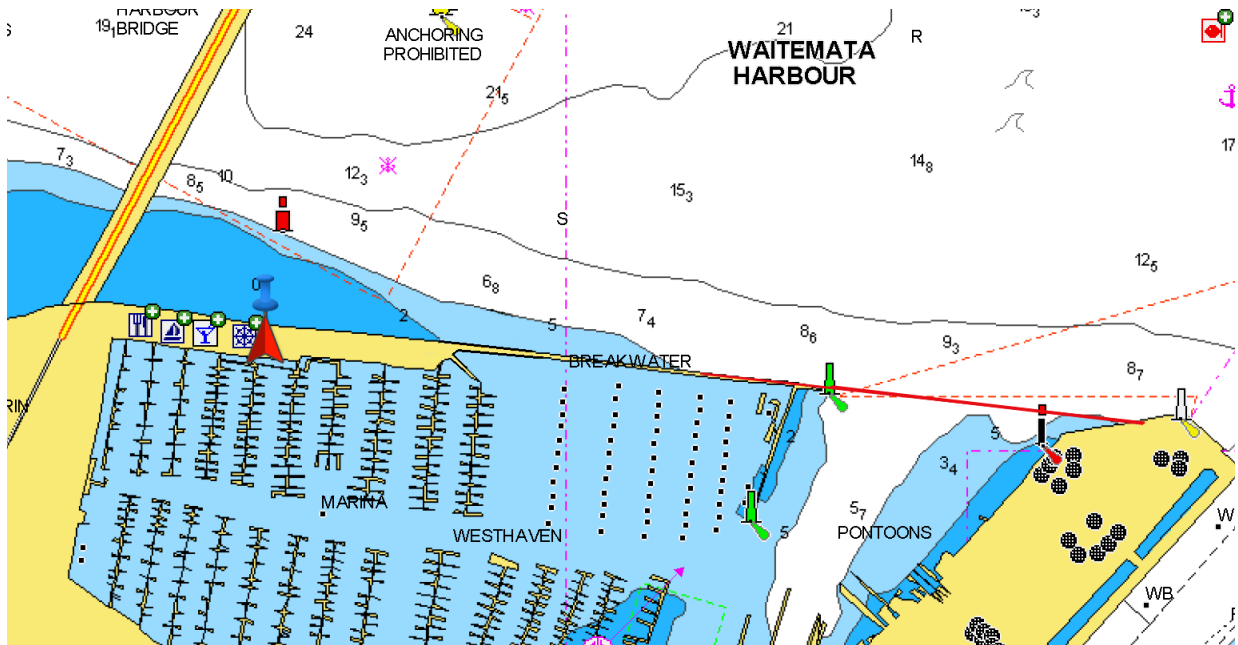


Diagram B

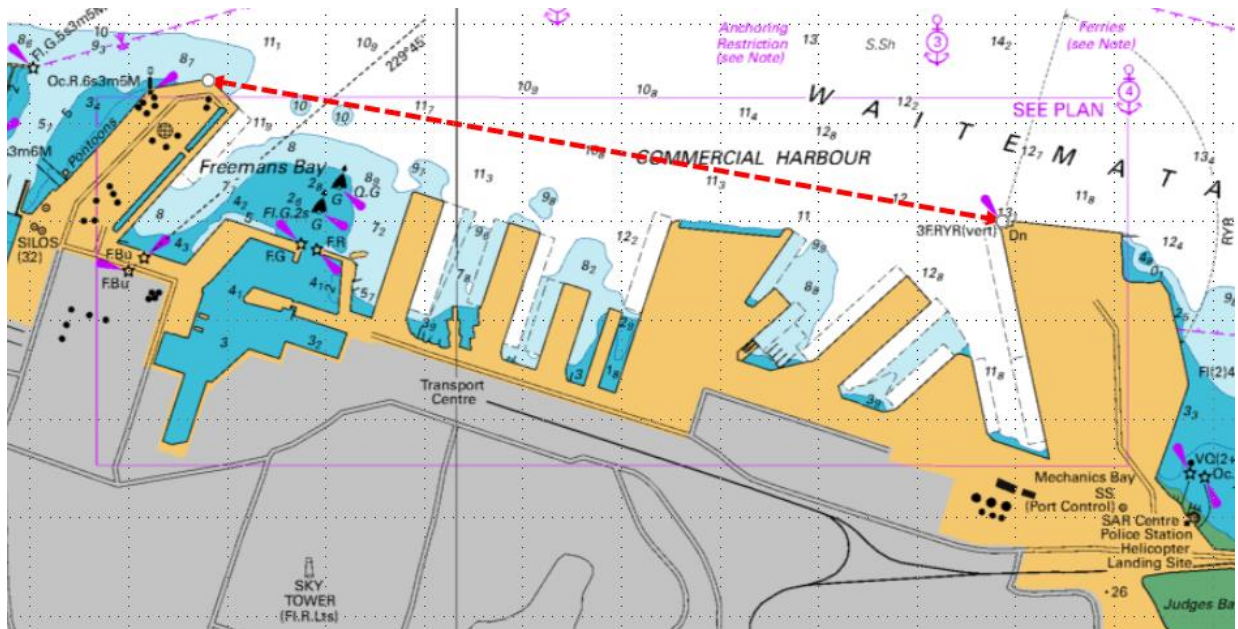
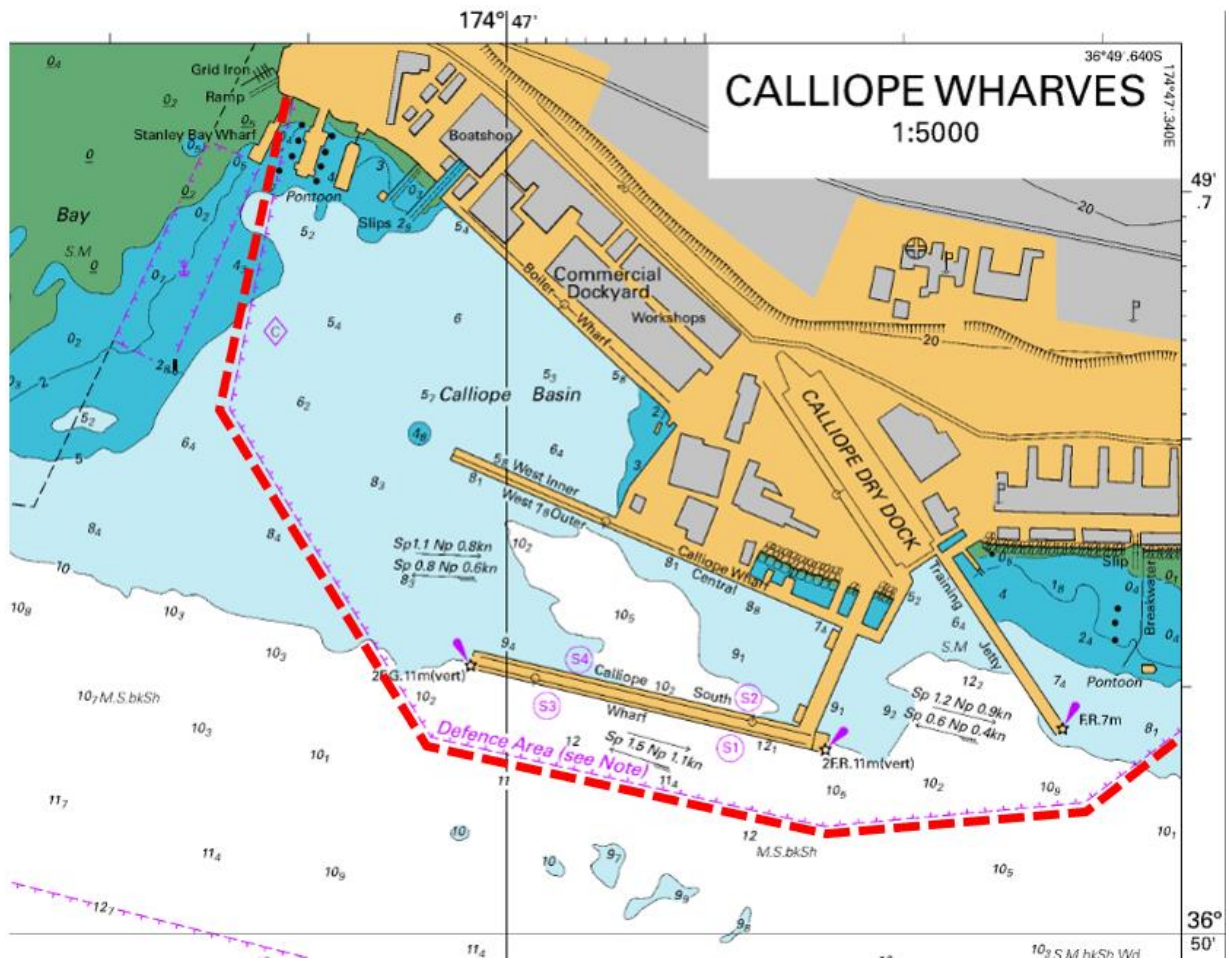


Diagram C



TEXT & RADIO SCHEDULES

LOCATION::

1. Prior to leaving the marina for the start, text 021 0880 1160 with you boat name & sail number.
2. Call RNZYS Race Control as you enter the start area, giving boat name, & Sail number and that you are an entrant in the Auckland to Tauranga Centennial Yacht race or rally. **RNZYS Race Control VHF Channel 77**
3. Soon after rounding Channel Island text 021 0880 1160 with you boat name & sail number.
4. Soon after exiting the "Hole in the Wall" text 021 0880 1160 with you boat name & sail number.
5. When abeam of Slipper Island text 021 0880 1160 with you boat name & sail number.
6. When abeam of Karewa Island text 021 0880 1160 with you boat name & sail number.
7. When approaching the finish line **VHF Channel 66:**
Finish Boat
8. **All boats when entering the Tauranga Harbour, please call:** **VHF Channel 77:**
Marina Control for berthing instructions and your welcome pack
9. **All boats communicating with Tauranga Race Control within Tauranga Harbour are to use:** **VHF Channel 77**

SAFETY INFORMATION

EMERGENCY CONTACT NUMBERS

RNZYS	09 360 6800
Coastguard Northern	*500
Coastguard Emergency from cell	*500
Tauranga Coastguard	07 578 5579
Tauranga Race Control	07 578 5512 or 0278 187 632

For all serious emergencies at sea contact VHF Channel 16.



Tauranga Yacht & Power Boat Club Inc



TYPBC BAR AND KITCHEN HOURS

Friday 31st	Bar:	Open as the boats arrive Hot Ponsonby Pies available throughout the night.
Saturday 1st	Bar:	Open All Day
	Kitchen:	7:00am Cooked Breakfast 11:00am Bar Food available 6:00pm Buffet Dinner
	Prize Giving:	7:30pm
	Live Band:	8:30pm Shy & Retiring Company

Please note these times are subject to change depending on race conditions.

Tauranga Taxis: 07 578 6086
Accident & Emergency: 07 577 0010 – 19 Second Ave, Tauranga

For more information contact TYPBC:

Phone: 07 578 5512
Email: office@yacht.org.nz
A2T Race Website: a2t.nz

